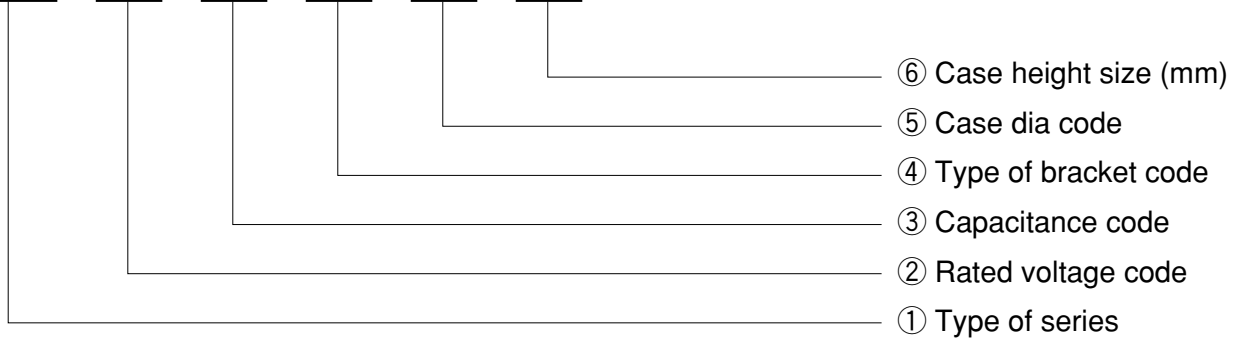


HOW TO ORDER

GXR3 2W 153 Y F 234



ALUMINUM ELECTROLYTIC CAPACITORS

① Type of series

Type of series
PH
HCGW2
HCGWA
FXW
FXR3
FXR
GXR3
GXR
HCG7A
HCGF6A
HCGF5A
FX3
FX2
FXA
HCGHA
GX3
GX2
GXA
HXA

② Rated voltage code

Rated voltage code	Rated voltage (V)
0J	6.3
1A	10
1C	16
1E	25
1V	35
1H	50
1J	63
1K	80
2A	100
2C	160
2D	200
2E	250
2V	350
2G	400
2W	450
2H	500
2L	550
600V	600

③ Capacitance code

Capacitance code	Capacitance (μ F)	Capacitance code	Capacitance (μ F)
271	270	822	8200
331	330	103	10000
391	390	123	12000
471	470	153	15000
561	560	183	18000
681	680	223	22000
821	820	273	27000
102	1000	333	33000
122	1200	393	39000
152	1500	473	47000
182	1800	683	68000
222	2200	104	100000
272	2700	154	150000
332	3300	224	220000
392	3900	334	330000
472	4700	474	470000
562	5600	564	560000
682	6800	684	680000

The first two digits are significant.

The last digit indicates the number of following zeros.

④ Type of bracket code

Type of bracket code	Bracket
I	Bracket I type
Y	Bracket Y type
X	Bracket X type
B	Stud screw capacitor
IUC	Insulation holder I type
YUC	Insulation holder Y type

⑤ Case dia code

Case dia code	Case dia (mm)
A	36
C	51
D	64
E	77
F	90
G	101
K	121

SCREW TERMINAL TYPE ALUMINUM ELECTROLYTIC CAPACITORS

Assembling method

Bracket(1) is used as the standard.

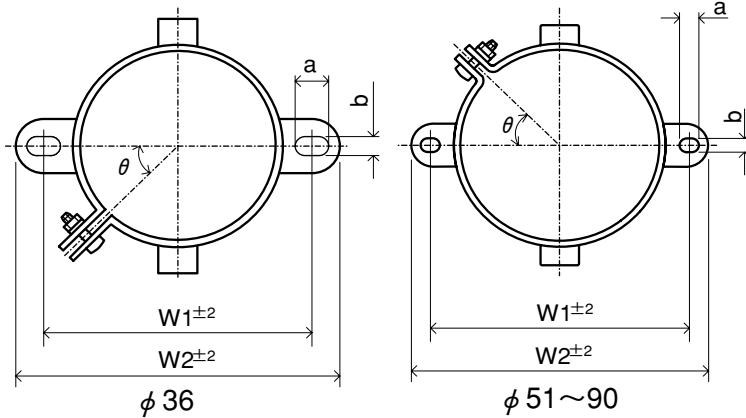
(Except the external diameter of case of $\phi 51\sim 101$, the Y-type bracket is used as the standard.)

(1) Bracket

I type

Type of bracket code : I

Available dia : $\phi 36\sim 90$

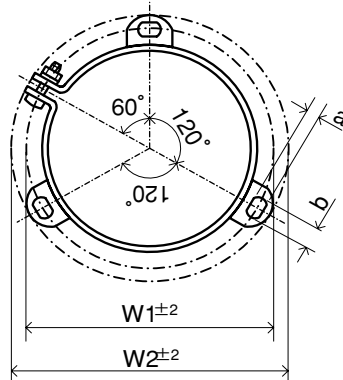


ϕD (mm)	a (mm)	b (mm)	θ ($^{\circ}$)	W1 (mm)	W2 (mm)
36	6.0	3.5	45	48.0	58.0
51	6.0	4.5	45	68.0	80.0
64	6.0	4.5	45	81.0	93.0
77	6.0	4.5	45	93.5	106.0
90	7.0	5.0	30	108.0	120.5

Y type

Type of bracket code : Y

Available dia : $\phi 51\sim 101$

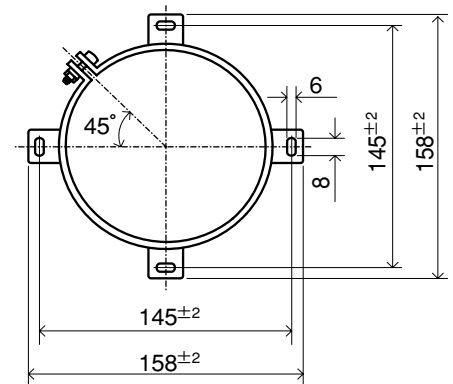


ϕD (mm)	a (mm)	b (mm)	W1 (mm)	W2 (mm)
51	4.5	7	63.5	73.0
64	4.5	7	76.2	85.1
77	4.5	7	88.9	98.4
90	4.5	7	101.6	111.1
101	5.5	8	115.0	127.0

X type

Type of bracket code : X

Available dia : $\phi 121$



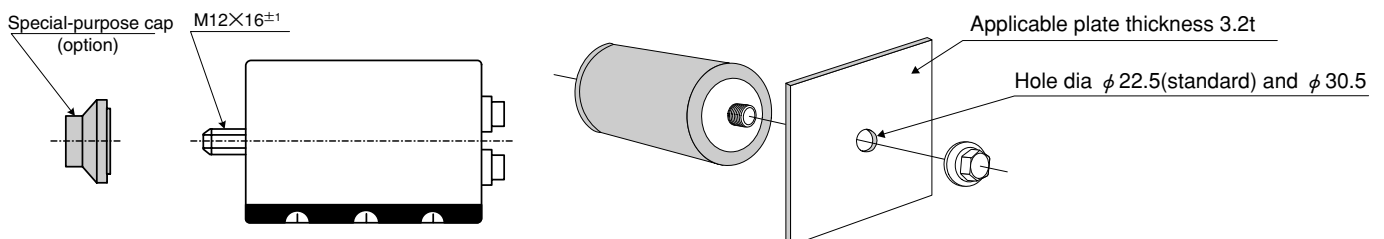
(2) Stud screw capacitor

Best suited for cutting back on assembly costs.

(For vibration and dielectric resistance, see the Technical Report.)

Type of bracket code : B

Available dia : $\phi 51\sim 101$

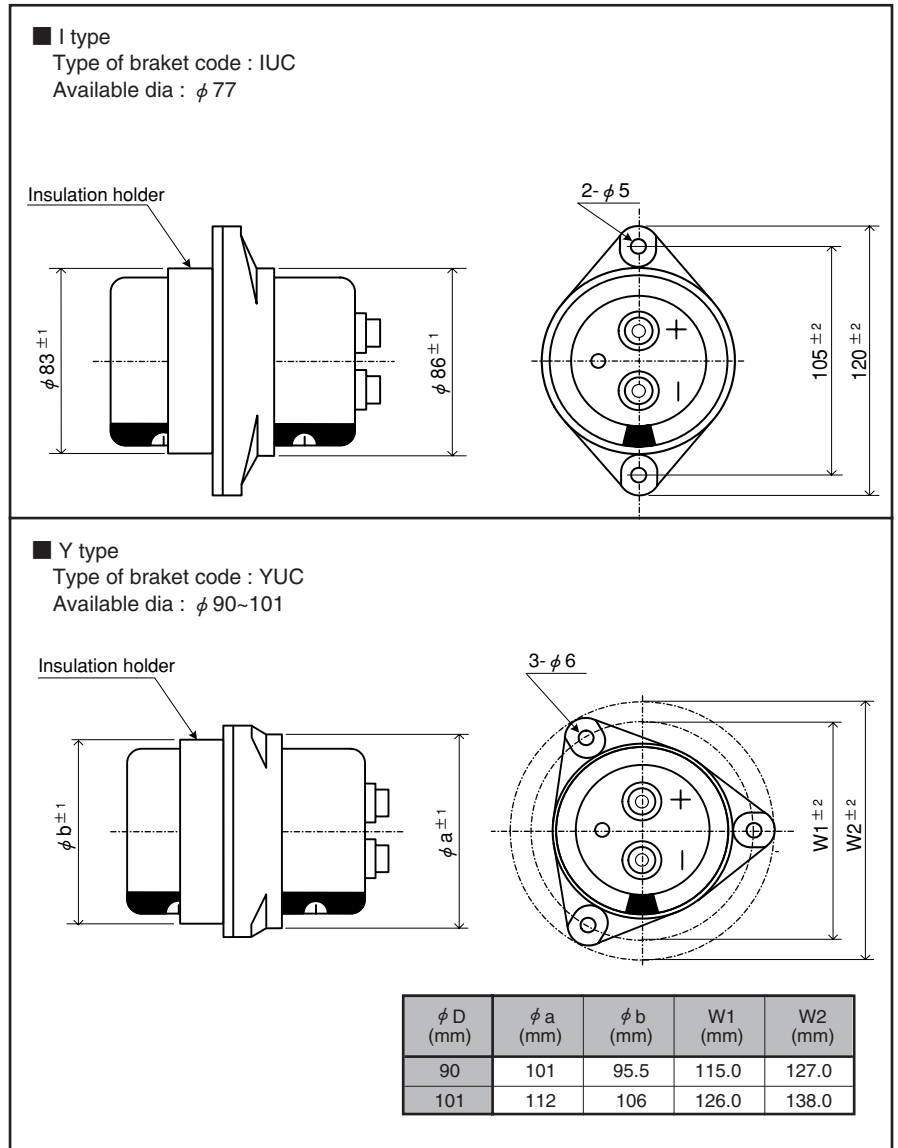
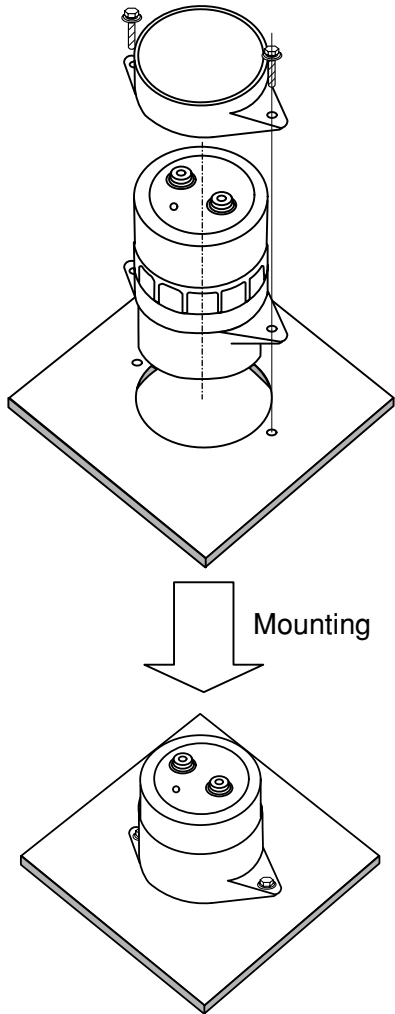


SCREW TERMINAL TYPE ALUMINUM ELECTROLYTIC CAPACITORS

(3) Insulation holder

Best suited for improving insulation and vibration resistance and for cutting back on assembly costs.

(For details, see the Technical Report.)



(4) Other

Useful not only as capacitors but also as a part of a capacitor unit.